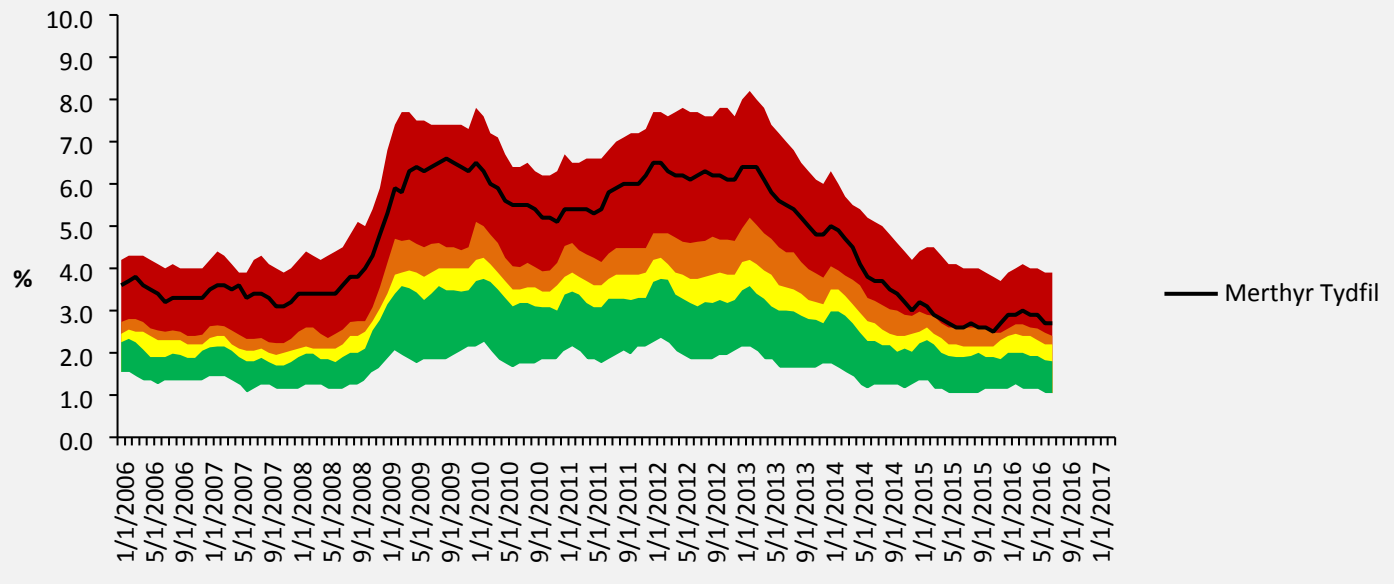


UNSATISFACTORY

The % of the working age population claiming Jobseekers Allowance



STORY BEHIND THE DATA

Latest Published Comparable Data: June 2016
 Latest Local Data Period: June 2016
 Data Frequency: Monthly
 Source: [NOMIS](#)

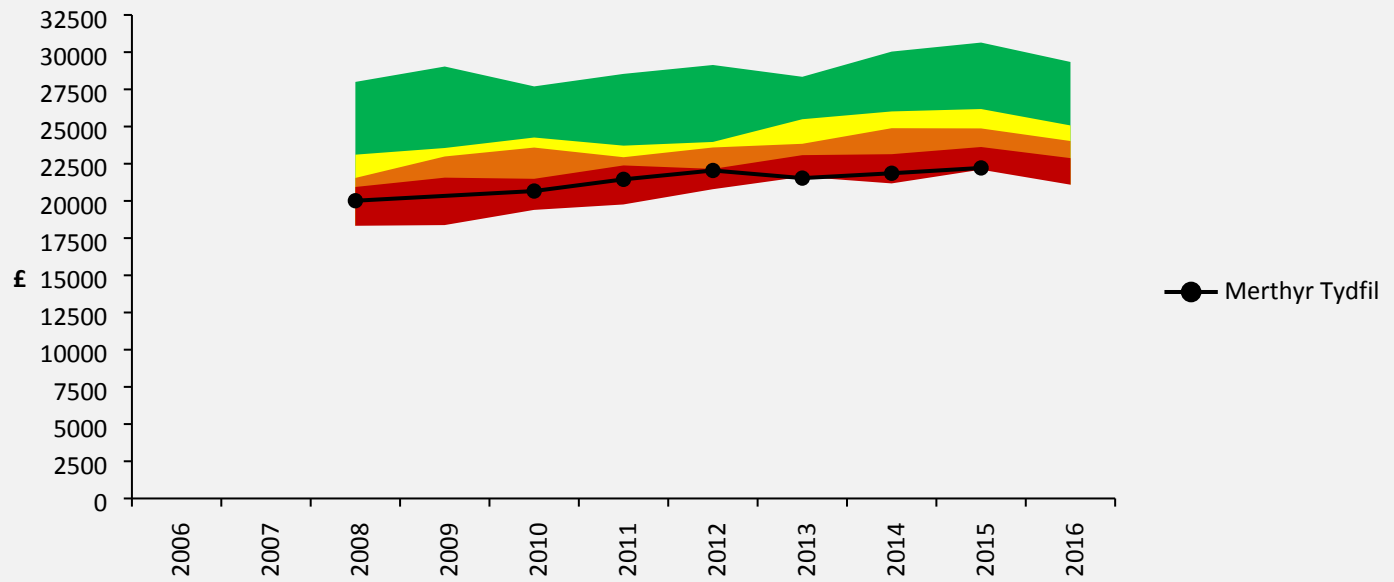
The claimant count is measured by the Jobcentre Plus administrative system. It measures the number of people claiming unemployment-related benefits. Since October 1996, this has been the number of people claiming Jobseeker's Allowance. It does not include people claiming other benefits. This measure is the number of persons claiming JSA as a proportion of the resident population of the same age.

The claimants of Universal Credit are not included in the claimant counts, and the rates are calculated using the mid-2012 resident populations.

This is a retrospective evaluation on March 2016 data. The percentage of the working age population claiming Jobseekers Allowance in Merthyr Tydfil increased to 3.0 percent, which is 0.6 percent above the Wales average of 2.4 percent. The key message is that from March 2012 to March 2016 performance has improved; however, we have remained in the lowest quartile for local authorities in Wales.

UNSATISFACTORY

The median annual pay (gross) for full time workers



STORY BEHIND THE DATA

Latest Published Comparable Data: 2015
 Latest Local Data Period: 2015
 Data Frequency: Annual
 Source: [NOMIS](#)

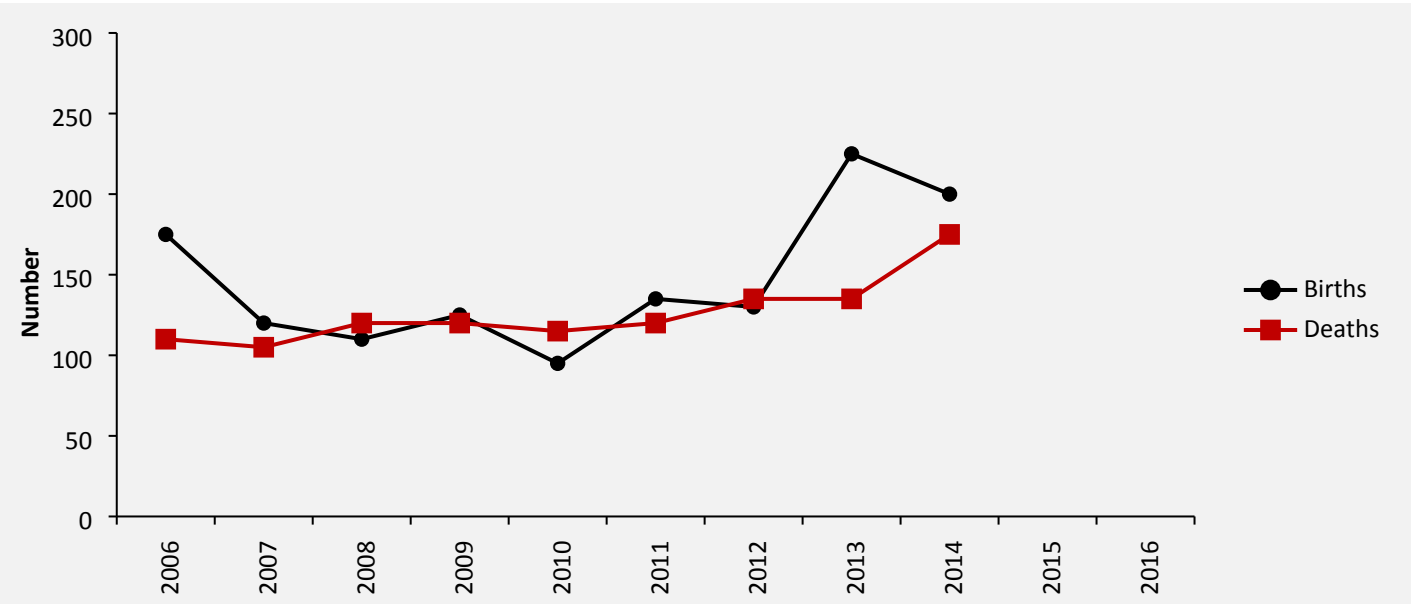
The median annual pay data is sourced from the Annual Survey of Hours and Earnings (ASHE), which provides information about the levels, distribution, and make-up of earnings and hours worked for employees in all industries and occupations.

The latest data shows a slight increase in the median annual (gross) pay for full time workers in Merthyr Tydfil; however, the low wages in Merthyr Tydfil remains unsatisfactory when compared across Wales. This is also depicted in the weekly and hourly wages information.

2014	Merthyr Tydfil (£)	Wales (£)	Great Britain (£)
Gross Weekly Pay			
Full-Time Workers	426.20	484.40	529.60
Male Full-Time Workers	467.80	517.40	570.40
Female Full-Time Workers	408.10	431.10	471.60
Hourly Pay (excluding overtime)			
Full-Time Workers	11.16	12.26	13.33
Male Full-Time Workers	11.71	12.66	13.93
Female Full-Time Workers	10.97	11.51	12.57

EXCELLENT

The number of new business births/deaths in the area



STORY BEHIND THE DATA

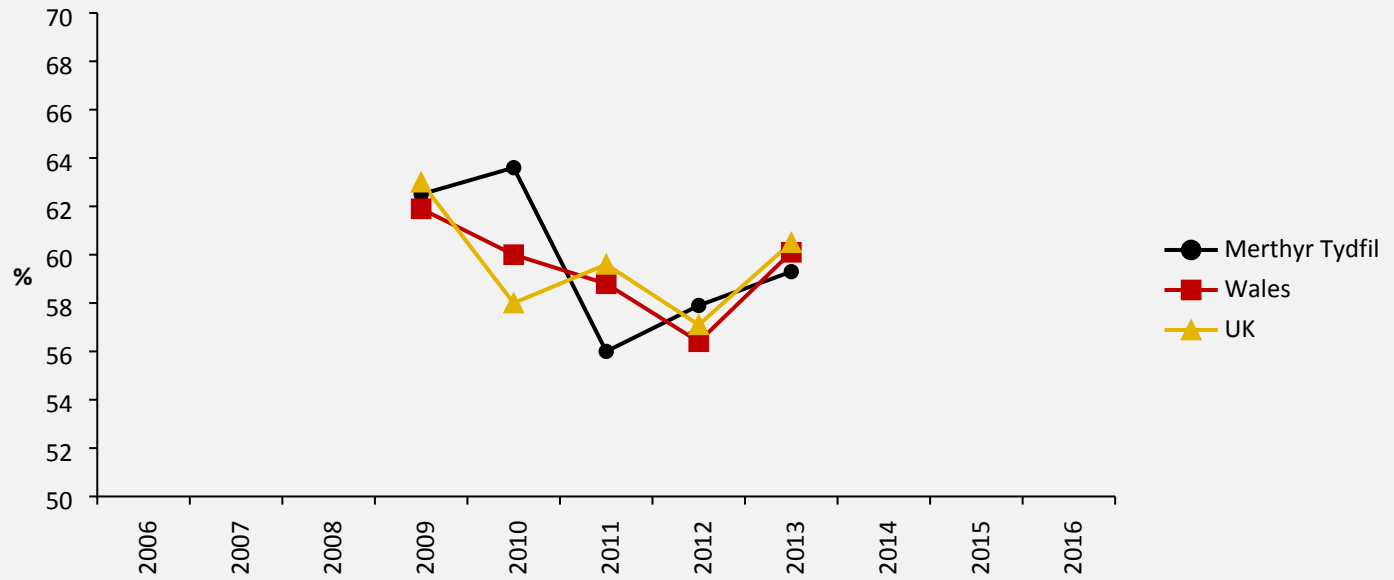
Latest Published Comparable Data: 2014
 Latest Local Data Period: 2014
 Data Frequency: Annual
 Source: StatsWales

The Office of National Statistics (ONS) Business Demography mainly focuses on changes in the registered business population. This report produces data on births, deaths, and survival of businesses. The chart shows that the number of business births per year prior to the economic downturn was higher than the number of business deaths. However, following the economic downturn in 2008/09 the difference between births and deaths has fluctuated. The figures suggest a gradual increase in business deaths, with a more sporadic level for business births.

The latest information suggests a positive difference between births and deaths. This is an indication of a strengthening local economy with a growing business sector in Merthyr Tydfil.

ADEQUATE

The % survivability (3 years) of newly born enterprises



STORY BEHIND THE DATA

Latest Published Comparable Data: 2013

Latest Local Data Period: 2013

Data Frequency: Annual

Source: StatsWales

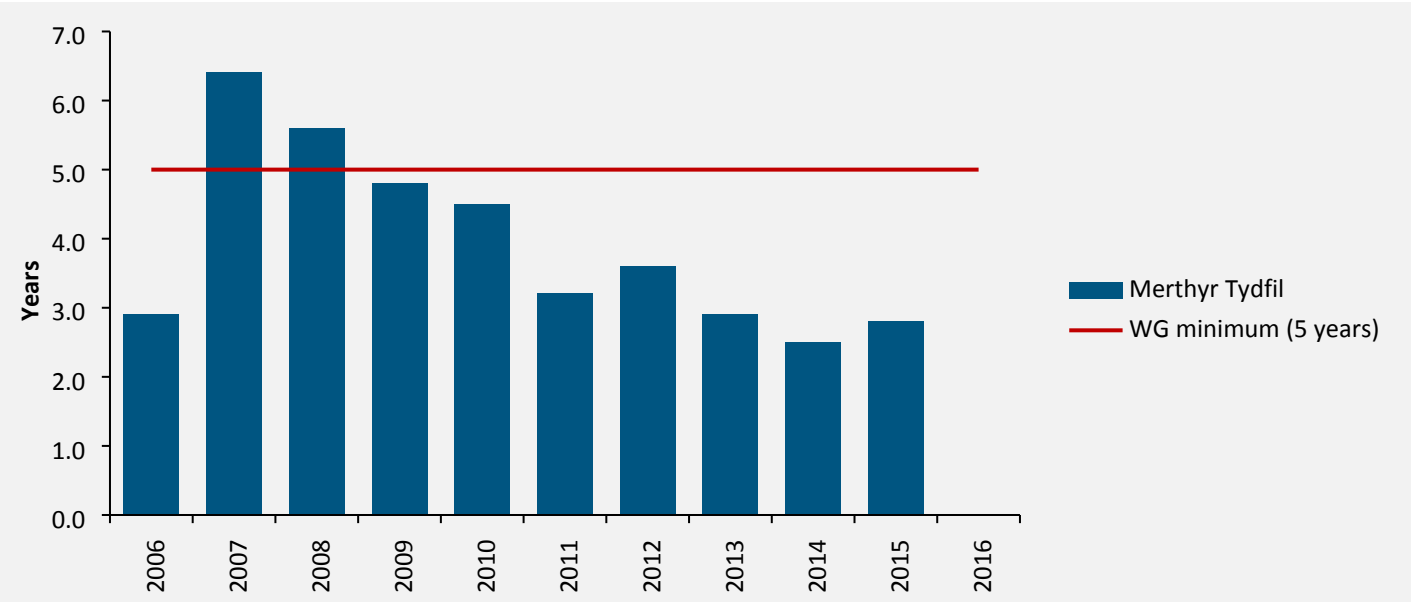
The tables below indicate the rates (%) of businesses born between 2007 and 2010. Business Demography mainly focuses on changes in the registered business population. The three year business survival rates in Merthyr Tydfil have fallen below the Wales and UK level.

Merthyr Tydfil	Births (%)				
	Births 2007	Births 2008	Births 2009	Births 2010	Births 2011
One year survival	95.8	95.5	92.0	89.5	92.6
Two year survival	79.2	81.8	84.0	73.7	74.1
Three year survival	62.5	63.6	56.0	57.9	59.3
Four year survival	50.0	54.5	48.0	52.6	..
Five year survival	45.8	45.5	40.0

UK	Births (%)				
	Births 2007	Births 2008	Births 2009	Births 2010	Births 2011
One year survival	95.4	92.0	90.8	86.7	93.1
Two year survival	81.1	74.0	73.8	72.5	75.6
Three year survival	63.0	58.0	59.6	57.1	60.5
Four year survival	52.0	48.9	48.9	48.1	..
Five year survival	44.6	41.3	41.7

UNSATISFACTORY

The year's supply of housing land as determined by the Joint housing Land Availability Study



STORY BEHIND THE DATA

Latest Local Data Period: 2015
 Data Frequency: Annual
 Source: [Welsh Government](#)

The Joint Housing Land Availability Study (JHLAS) presents the housing land supply for Merthyr Tydfil at the base date of the 01 April 2015. The JHLAS shows that, based on the residual method set out in Technical Advice Note 1, Merthyr Tydfil has 2.8 years housing land supply. This is lower than the Welsh Government expectation for each local planning area to have a minimum of 5 years housing land supply.

START DATE

April 2014

GOOD

FINISH DATE

March 2017

Background

This project is about the management and monitoring of the programme, ensuring the funding secured will deliver the key projects, such as the revitalization and refurbishment of key buildings in the town centre for new uses, bringing forward key sites for new Housing opportunities, development of the Cyfarthfa Heritage area, and an Enterprise and Entrepreneurship facilitation programme. They will be delivered in partnership with the third, public, and private sectors.

The Project

The VVP programme is the Welsh Government regeneration framework that has allocated £12.873m of funding to Merthyr Tydfil Town Centre over 2014 to 2017. The aim of this programme is to:

- Revitalise and refurbish a number of key buildings in Merthyr Tydfil Town Centre
- Bring forward key sites for new housing opportunities
- Develop the Cyfarthfa Heritage area
- Develop infrastructure connecting to the Town Centre, and
- Devise an enterprise and entrepreneurship facilitation programme.

There is a focus on physical infrastructure projects that create opportunities to influence employment and business growth in the Merthyr Tydfil Town Centre.

Where are we now

An independent evaluation of the Vibrant and Viable Places programme is undertaken by the Welsh Government. The second Gateway Review in July 2015 found that the programme was on track and met the green/amber status. The only recommendation included within the report was linked to the housing element of the programme once again and the prioritisation of key sites.

- A more explicit plan is required to set out the decision-making process and the timescale for finalising the housing elements of the programme.

In addition, they highlighted that there is now sufficiently strong management focus on realising benefits over the longer term.

START DATE	November 2014
FINISH DATE	November 2020

ADEQUATE

Background

This project focuses on the development and delivery of the Social Enterprise Strategy, which seeks to clarify the meaning of social enterprise both broadly and locally, explore the sector's contribution to the local economy and differing models of delivery.

The Project

This programme will aim to:

- Develop a new Social Enterprise Strategy, and
- Develop a work programme that ensures social enterprises are fully supported to fulfil their social and business objectives

Where are we now

The Social Economy Strategy is on track for completion and will be presented to the Social Enterprise Network (SEN) in November 2016. In order to contribute to the Social Economy Strategy and sustain the contribution of the Social Enterprise grants programme we are carrying out a review of all 29 organisations, which includes:

- Assisting the 29 organisations to identify other relevant support available
- A 'financial health check' to identify any immediate or short term issues
- Evaluating the continued economic impact of the SEWCED investment

Once the review is completed a report will be produced outlining the findings and recommendation, where the learning will be used to contribute to the Social Enterprise Strategy. In addition, where issues are identified the team will utilise the SEN to identify potential assistance. The SEN have a future event planned, which will include a presentation on the imminent population needs assessment that will be undertaken in the Cwm Taf area in order to raise awareness and stress the importance of participation by groups and individuals.