

SCRUTINY COMMITTEE REPORT

Date Written	29 th November 2019
Report Author	Lisa Curtis-Jones
Service Area	Social Services
Committee Date	17 th December 2019

To: Chair, Ladies and Gentlemen

Regional Partnership Business

1.0 SUMMARY OF THE REPORT

- 1.1 The purpose of this report is to update Scrutiny members on some of the work being completed with partners. The Social Services and Well-Being Act (Wales) 2014 came into effect in April 2016 and made clear the expectation that there would be more regional and partnership working with the Local health board and neighbouring Local Authorities.
- 1.2 As a result of the joint working a Population Needs Assessment was undertaken and this has assisted in identifying priorities for Cwm Taf Morgannwg and the development of a Regional/Area Plan. It is important that we look at the long term needs of the population and this fits with the ethos of the Well-Being of Future Generations (Wales) Act 2015.
- 1.3 The report outlines where we are now with the various strategies that have been agreed regionally and outlines some of the priorities and the work being completed on a regional basis.

2.0 RECOMMENDATIONS that

- 2.1 Scrutiny Committee Members note and debate the contents of the report.

3.0 INTRODUCTION AND BACKGROUND

- 3.1 The Social Services and Well-being (Wales) Act 2014 ("the Act") came into effect on 6th April 2016. The Act required that Local Authorities and their Local Health Board establish a Regional Partnership Board to manage and develop services to secure strategic planning and partnership working between Local Authorities and Local Health Boards and to ensure effective services, care and support are in place to best meet the needs of their population.
- 3.2 The Cwm Taf Social Services and Wellbeing Partnership Board ("the Board") was established and objectives were set. Initially priorities were set for the Board and progress on the integration of services for the following:
- Older people with complex needs and long term conditions, including dementia;
 - People with learning disabilities;
 - Carers, including young carers;
 - Integrated Family Support Services; and
 - Children with complex needs due to disability or illness.
- 3.3 The focus initially for the partnership board was on the preparatory work to establish the strategic frameworks to guide service development over the next 5-10 years and the completion of the Population Assessment in 2018 was a significant milestone for the Board in that regard.
- 3.4 In response to the Population Assessment, a Joint Regional/Area Plan was produced by 1st April 2018 by the two Local Authorities (RCT and MT) and the UHB under the direction of the Board.
- 3.5 The introduction of the Integrated Care Fund and the Delivering Transformation Grant has allowed Cwm Taf to be innovative and look at new models and the development of new services.
- 3.6 On 1st April 2019 following consultation the boundaries for the health board changed and Bridgend joined the partnership board. There was a period leading up to this where Bridgend Social Services officers attended the board meetings and operational meetings to prepare for the new board in 2019. There have been varying workshop events over the past year to assist the transition. Both Population Needs Assessments have been discussed and compared, and the similarities and priorities have been highlighted.
- 3.7 There have also been discussions about the Governance arrangements and the membership of the board moving forward. Further work is required on this over coming months.

4.0 WHERE WE WERE

- 4.1 It is important that we listened to the public view and what services would be required in future and the population needs assessment allowed us to consider the long term plans for Cwm Taf Morgannwg.

- 4.2 The Board identified a number of areas of priority across Cwm Taf and these are outlined below:

Older People

- 4.3 The Region developed a Joint Commissioning Statement of Intent for Older People's Services with a common vision for integrated health and social care services for older people in Cwm Taf:

'Supporting people to live independent, healthy and fulfilled lives'

In implementing the Statement of Intent, the following priorities were included in the Regional Plan:

OP1 We will nurture supportive communities and family networks through easily accessible universal services, general and targeted health and wellbeing initiatives

OP2 We will offer integrate, time limited and goal oriented services to help people whose needs cannot be purely met by community and preventative support

OP3 We will ensure people have access to holistic assessment that takes into account people's needs and wishes, promoting choice and control to improve quality of life

OP4 We will ensure that older people whose needs require a specialist or substitute service are able to access those services at the right time in the right place and that they offer an improved quality of life.

- 4.4 Areas of work undertaken:

- Market Position Statement (stronger partnership working between commissioners and providers.)
- Developed a regional care home contract and service specification.
- The creation of the Stay Well @ Home Service.
- Development of the Virtual Ward scheme.

Children and Young People

- 4.5 During 2017/18, a draft Cwm Taf Regional Statement of Intent for Supporting Children, Young People and Families was produced jointly by partners in Cwm Taf in response to the population analysis, and building on consultation with the public and professionals in 2016. It was intended to remain relevant until 2022 and was proposed as the shared vision, principles and objectives to direct the work of all partners.

- 4.6 The Statement of Intent was focused on the following shared vision, that:

- Children, young people and families in Cwm Taf will live safe, healthy and fulfilled lives and achieve their full potential.
- Families and communities will be more resilient and independent.
- Our focus on communities will give children, young people and families the best possible environment to thrive.

- The balance of resource will shift from safeguarding, substitute and complex care to early and targeted help.

4.7 The final Statement was approved by partners in July 2018. The Regional Plan includes the priorities below:

CYP1 We will have the right universal services at the right time to promote wellbeing, achievement and independence

CYP2 We will focus on early help for those with emerging difficulties

CYP3 We will target intensive support for those who are really struggling

Carers

4.8 The Partnership's Carers Strategy 2016-19 has the following vision:

Carers of all ages in Cwm Taf will be recognised and valued as being fundamental to supportive and resilient families and communities. They will not have to care alone and will be able to access information, advice and support to help meet their needs, empowering them to lead healthy and fulfilled lives, balancing their caring role and their life outside caring.

4.9 The Regional Plan contains the following actions:

- C1 Identifying carers of all ages and recognising their contributions
- C2 Providing up to date, relevant and timely information, advice and assistance to Carers of all ages.
- C3 Providing support, services and training to meet the needs of Carers of all ages
- C4 Giving Carers of all ages a voice with more choice and control over their lives
- C5 Working together to make the most of our resources for the benefit of carers of all ages

4.10 In September 2017, the RPB commissioned the Welsh Institute of Health and Social Care to work with partners to review our current service model for carers and consider how we could provide more effective integrated services across the region. The Summary report of this work produced in January 2018 includes a blueprint of what a comprehensive "offer" for Cwm Taf carers could look like across five themes:

- Access, information, advice and assistance
- Support services
- Employment support services, education and training
- Respite and breaks
- Making it happen

4.11 A separate detailed Carers Annual Report was required by WG. The Cwm Taf Carers Annual Report for 2018/19 has been prepared and approved by partners.

People with Learning Disabilities

- 4.12 Following engagement and a range of activities to raise awareness and involve service user, carers, public and other stakeholders in the development of a Joint Statement of Strategic Intent for Children, Young People, and Adults with Learning Disabilities (that includes autism and complex needs) and their families, the Partnership has approved the final version)
- 4.13 The Statement of Intent describes a shared commitment to deliver a new model for health and social services, focused on the following key messages:
- Maximise the use of universal services
 - Increase early intervention, prevention, information, advice and assistance
 - Build community support and develop people's independence
 - Sustain people in their own homes
 - Enable people to live full lives and achieve their potential
 - Keep people safe
 - Make the best use of our resources

Pooled Budgets

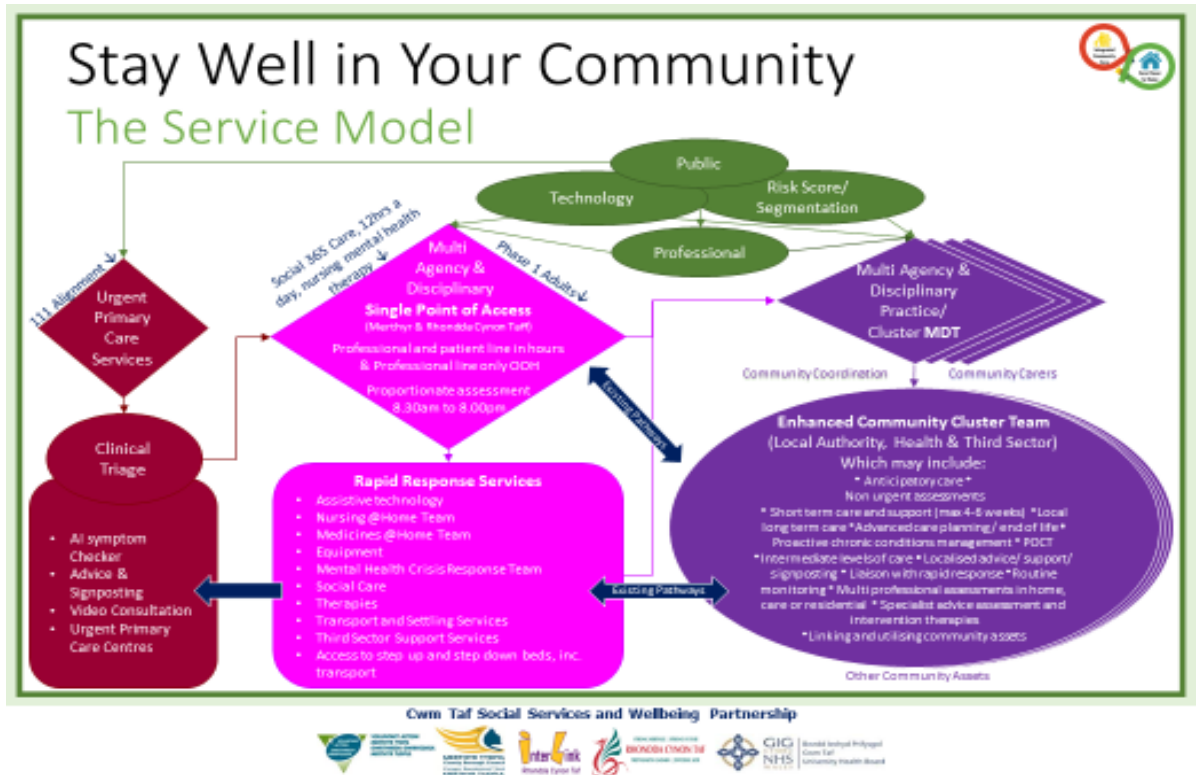
- 4.14 In the Cwm Taf region, pooled budgets are in place for youth offending services, integrated equipment services and learning disability packages of care. These funds provide an enabler for increasing value and improving outcomes through integrated and seamless services for a range of patient and client groups.
- 4.15 An overarching Pooled Fund for residential and nursing care has been established and is operating as set out in a Legal Agreement between partners, hosted by RCT CBC. It essentially encompasses all older persons' independent residential and nursing placements in establishments located within the regional footprint.

Welsh Community Care Information System (WCCIS)

- 4.16 As part of a collaborative approach across Cwm Taf, we implemented the Welsh Community Care Information System (WCCIS). This was a major new national ICT system which will enable social services (adults and children) and a range of community health services (including mental health, therapy and nursing) to share relevant information across disciplines, organisations and geographical boundaries.
- 4.17 By using the same system, health and social care staff can more effectively together plan, coordinate and deliver services and support for individuals, families and communities, with access to key data to support enhanced treatment and care.
- 4.18 The implementation of WCCIS is a priority action in the Regional Plan. Merthyr Tydfil CBC went live with WCCIS in July 2017 and has subsequently been delivering against its WCCIS Development and Operational Plan which includes ongoing system improvements, processes, quality assurance and training. RCT went live in April 2018.

5.0 WHERE WE ARE NOW

- 5.1 The Regional partnership Board is well established and the section above outlines some of the areas of partnership working across the region. As outlined above Bridgend formally joined the partnership board on 1st April 2019 and work has been ongoing around integration of services in some areas.
- 5.2 We are developing a joint regional plan and looking at previous population needs assessments where there are many similarities in demands to the services.
- 5.3 Regional working across Cwm Taf Morgannwg is more advanced in some areas with the development of the Cwm Taf Morgannwg Safeguarding Board, WCCIS regional team and the workforce development team.
- 5.4 The statements of intent are still relevant but we are considering the future priorities of the board and the future governance arrangements. Bridgend officers attend the relevant group meetings to contribute and influence future plans. Officers from Cwm Taf have attended information sharing events hosted by Bridgend colleagues in respect of some of the good work they are doing both in adults and children services, which has been very positive.
- 5.5 Development in the areas above have continued across the region. The introduction of the ICF funding has allowed some innovative working across the region. This funding continues and we have seen more investment within children services this year which will have a positive impact on our young people. Within Merthyr Tydfil this has assisted us to develop the Early Help Hub and Supporting Family Change team. The latter was assisted by Merthyr Tydfil bringing the Integrated Family Support Team back in house and developing the service locally to provide intensive support to families at the earliest opportunity. This team is still in development as recruitment inly commenced in recent months.
- 5.6 The regional carers' strategy is ongoing. Locally we have recruited to the carers post to enable us to take the recommendations of this report forward.
- 5.7 This year has seen the introduction of the transformation Fund investment from Welsh Government. This is an investment of £22.7 m into Cwm Taf Morgannwg regional partnership.
- 5.8 There are two Cwm Taf Morgannwg Regional Partnership programmes, 'Stay Well in Your Community' (SWYC) and 'Accelerating the Pace of Change of Integrated Services' (APCIS).
- 5.9 The programmes include Assistive technology, Stay Well @ Home (Phase 2), and Enhanced Community Cluster team in Your Community. It links to the Healthier Wales initiative which is the Welsh Government's long-term plan to bring health and social care services together. The overall aim is to move from an acute service to a wellness service, and move care from hospitals into our communities. The aim is for people to be able to stay closer to home and for as long as possible. Both programme aim to build upon successful schemes to develop services around people within their communities; providing timely responses to health and social care needs and building well co-ordinated, resilient communities.



6.0 WHERE WE WANT TO BE

- 6.1 We want strong working relationships with our partners and working together will provide improved and sustainable services for the public. The plans we have drawn up need to be operational and resources provided to meet needs.
- 6.2 We want to provide services in a timely manner, and provide information and advice and assistance when required. Many of the innovations this year have been focussed on Early Intervention and Prevention and providing services to children and adults in a timely manner.
- 6.3 Improve outcomes for people across Merthyr Tydfil. We want them to live independent, healthy and fulfilled lives.
- 6.4 We want to continue to engage with the public and improve communication. It is important that services we provide are evaluated and that views are sought. We need to ensure we are providing the right services at the right time, and if not then further develop these where required.

7.0 WHAT WE NEED TO DO NEXT

- 7.1 We will review the Actions in the Plan annually to see if we are making progress and making it quickly enough.
- 7.2 We will continue to work with partners across Cwm Taf Morgannwg to improve outcomes for children and adults in Merthyr Tydfil.

7.3 We will continue to further develop services where appropriate as part of the regional partnership across children and adult services, for example Stay Well in the Community and the Multi Agency Permanence Support Services (MAPPS).

LISA CURTIS JONES
CHIEF OFFICER (SOCIAL SERVICES)

COUNCILLOR CHRIS DAVIES
CABINET MEMBER FOR
SOCIAL SERVICES

BACKGROUND PAPERS		
Title of Document(s)	Document(s) Date	Document Location
Does the report contain any issue that may impact the Council's Constitution?		No