

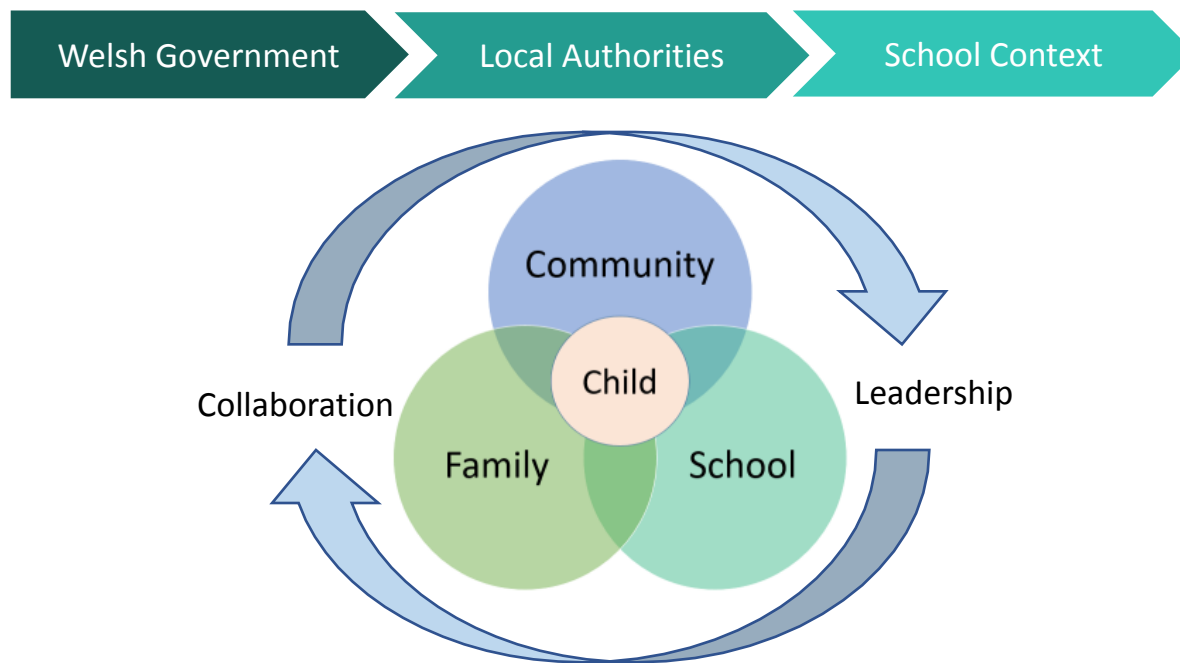
Community Focused Schools

Summary for Members

*Merthyr Tudful ...
... lle i fod yn falch ohono*

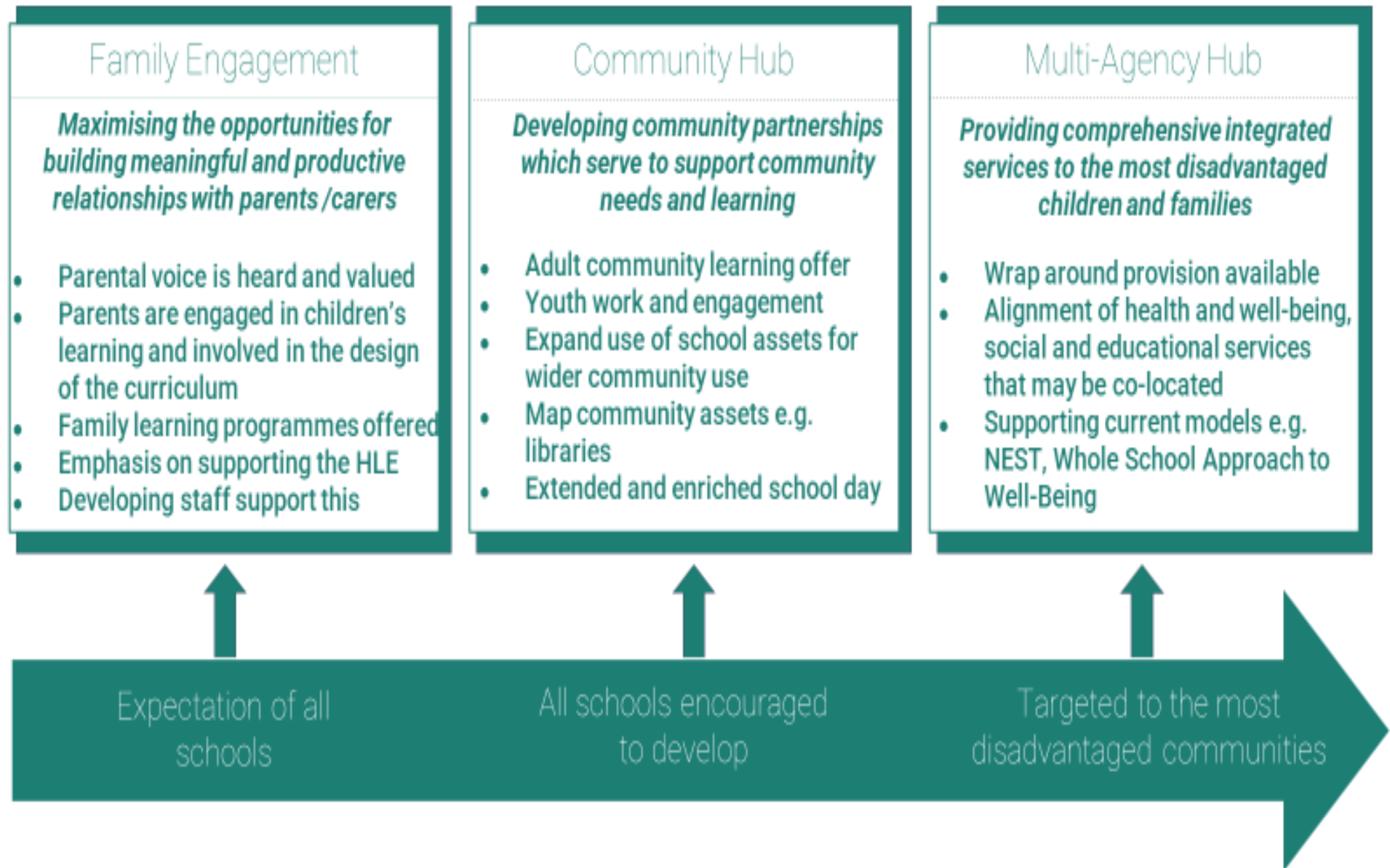
*Merthyr Tydfil ...
... a place to be proud of*

Community Focused Schools



A community school is defined as one that has the best interests of learners, families and the community at its heart. These schools reach out to engage families and work with the wider community, knowing the difference this can make to the success of all pupils in the school, particularly those who are disadvantaged by poverty (Estyn, 2020)

Continuum of Provision



Welsh Government support

- Extending Family Engagement Officer provision.
- Community School Managers.
- Community school capital funding
- Community schools and multi-agency provision.
- The leadership of community schools.
- Professional learning provision and community schools.
- Adult learning and community schools.
- Local Authority context (begun work with 3 - want to extend this to all).

What have we done?

- Initial discussion paper to Cabinet (assets)
 - Specific dialogue with secondary schools
- Discussion at Education Partnership Panel
- Discussion with Chairs & Vice Chairs of Governors
- Strategic secondary Governors group discussion
- Engaged with WG research
- Workshop with all Headteachers

Initial findings from Research

- Consider impact of pandemic on schools and communities
 - Legacy of Communities First & other initiatives
- What does the term community mean!
- Actual engagement between wider community and schools
 - Food Poverty
- Capacity in schools to develop community spaces
 - Capacity of Family Liaison Officers/Community officers
 - Strategic plans for community engagement
 - Cost in terms of staffing and energy for community usage (insurance)
- Role of social landlords
- Engagement with parents
- Memorandum of Understanding
- Community Governor networking

Where next?

- Consider how the Multi-agency Hub model could be delivered across the County Borough
- Engagement with other clusters
 - Cardiff Met has been commissioned to undertake same research in Cyfarthfa Cluster & Afon Taf cluster
- Develop strategic plan for the community focused school agenda to consider at Council level with wide-ranging consultation